

ANNUAL REPORT

1 MARCH 2022 TO
28 FEBRUARY 2023



Masikhule makes a positive contribution to the upliftment of communities through Early Learning Program development, skills training, mentorship and capacity building in the field of Early Childhood Development.

EARLY LEARNING PROGRAM (ELP) /CURRICULUM TRAINING

Our twice monthly ELP training has gained traction with more ECD Centres implementing our holistic, practical, relevant and fun program. Our ELP success lies in regular mentorship and access to valuable resources which include daily programs, theme bags and classroom resources.

ELP in numbers:

- 18 Practitioners
- 16 ECD Centres
- 21 ELP Training sessions
- 362 Children (3 - 5 year olds)
- 42 Mentorship Visits
- 100 Theme Bags used
- 12 Stationery Kits issued

Included in our training were sessions by our Occupational Therapist (OT) highlighting specific areas of learning competencies, why they are important and how to stimulate their development.



ECD TRAINING

Teacher Enrichment Workshops (TEW) 34 attendees x 4 per annum

As part of our Early Intervention programs, Masikhule offered 4 TEWs in 2022 to 34 ECD practitioners covering the following topics:

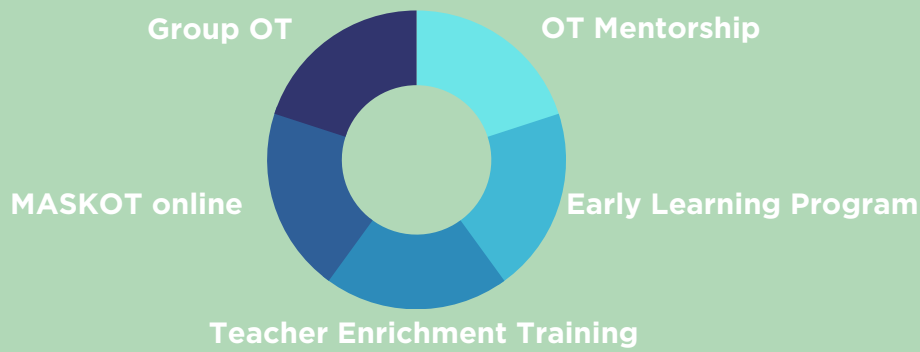
Gross Motor Skills, Fine Motor Skills, Basic Concepts, Assessments and Report-writing.

The focus of these workshops was to highlight common developmental delays / learning challenges and how the ECD practitioners can improve these skills using resources made mostly from waste materials.



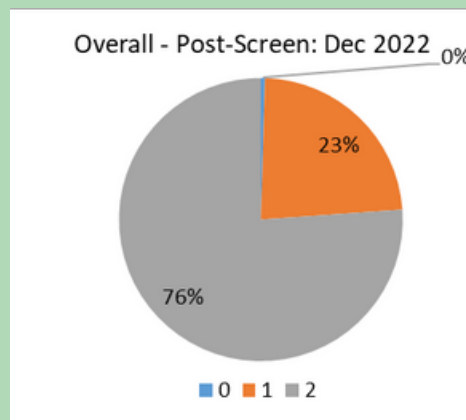
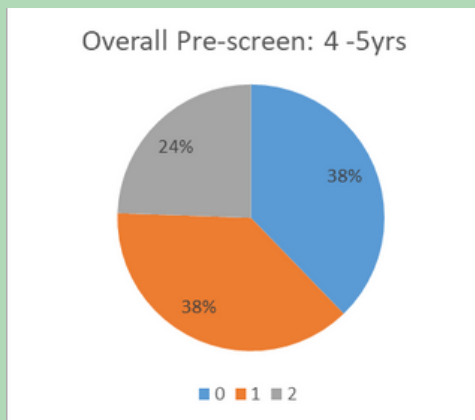
EARLY INTERVENTION

Keeping children on track is a integrated approach - using a variety of levels of intervention.



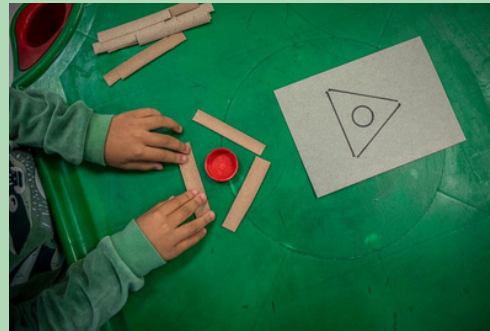
Our OT screened 95 4 - 5 year-olds in February and again in December 2022, with the following results:

Key: 0 = Unable / 1 = Fair but needs attention / 2 = Achieved skill



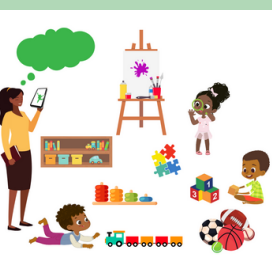
Most significant areas of concern included postural control, balance, fine motor skills, basic concepts, visual perception, visual-motor integration (VMI) and memory. These aspects received particular OT attention, with much improvement seen in all areas of development.

What is significant to note is not only the improvement in children's scores, but the competency and insight of the practitioners as well. Further value of this intervention has been seen in the improvement in the children's confidence - setting them on a favourable path for lifelong learning and success.



MASKOT Online Platform

MASIKHULE 
Keep On Track



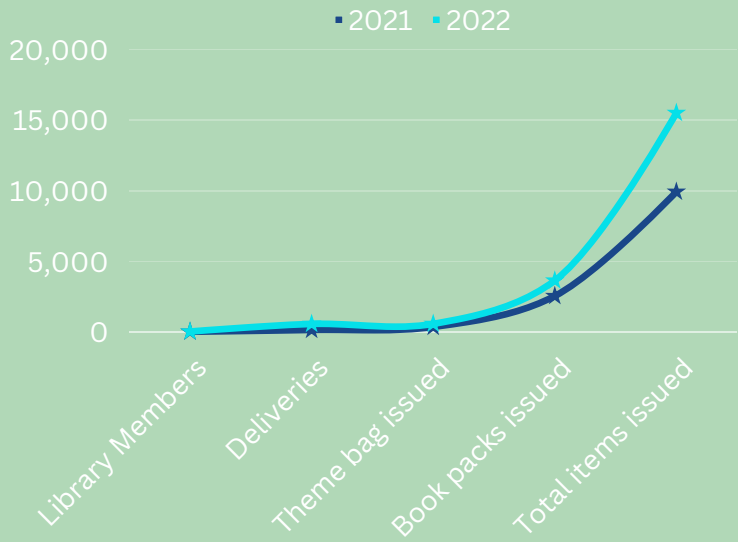
Our online Early Learning Program platform continued to take shape and develop into an integrated, relevant, practical and accessible tool. MASKOT offers a theme-based Early Learning Program with themes, daily programs, ideas for theme tables, posters to download (and print), songs to listen to, creative art ideas and extra occupational therapy activity ideas to stimulate all areas of development and learning.

The platform will be officially launched in the second half of 2023 - once we can ensure that the content is truly accessible to anyone, anywhere.

We feel confident that our mission to keep young children on track developmentally will gain further traction through this platform.

EARLY LEARNING RESOURCE LIBRARY (ELRL)

Masikhule continued to provide a vital service to community-based ECD Centres with theme bags, educational games and age- and language-appropriate books delivered to 43 ECD Centres every 2 to 3 weeks.



The ELRL had a very positive 12-month period with steady growth and innovative steps taken to accommodate the increase in activity and demands. The comparative annual statistics show a 36% increase in items issued to ECD Centres and a 33% increase in membership. The number of theme bags available increased by 32% to 161 bags. Delivery of theme bags (every 2nd week since Jan 2023) is convenient and practical for practitioners and ensures they can remain at the school during school hours while still having access to much needed educational resources for their programs. The theme-booklets in the theme bags have been replaced with the Masikhule ELP Theme Booklets which go hand-in-hand with the Masikhule online learning platform (MASKOT) that is available free of charge to all ECD Centres.

EARLY NUTRITION

Thanks to our incredible donors (Upside Trust, Golden Sunbeams e.V. and Pebbles Kitchen) we have been able to keep almost 2000 children from over 40 ECD Centres well-nourished with fortified porridge and prepared (frozen) meals.



Nutrition in Numbers:

3 625 kg fortified porridge (Oct 2022 - end Feb 2023).

64 010 prepared nutritious lunch meals.



ECD REGISTRATION PROJECT

Masikhule is one of 17 Service Providers in the Western Cape tasked by the provincial Department of Basic Education to assist ECD Centres with the process of registration as a partial care facility with the department. Over the past year we have provided this service to 76 ECD Centres in the areas of Somerset West, Sir Lowry's Pass and Chris Nissan Park. Our services to the ECD community include assisting with registration, liaising with municipal and provincial departments and conducting site and support visits - with more than 150 site visits during the year. Over the past year, the Registration Team is pleased to report that 17 ECD Centres have received full registration certificates from the Department of Education.

SPECIAL PROJECTS

Early Literacy

Reading Corners

Thanks to donations received, we installed 5 Reading Corners. This included beautiful book corner units, a variety of appropriate books and games, a fun mat to sit on and comfortable cushions.

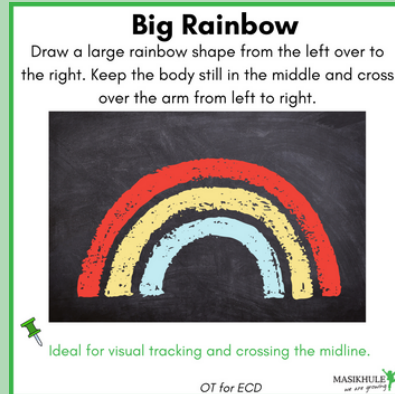


Thanks to a generous donation by Book Dash, we delivered 8 700 books to over 2000 children to take home.

Project Playboard

As part of our Special Project and Early Intervention programs, Masikhule installed 19 large indoor and outdoor playboards (blackboards at a level for children to access) to encourage core postural control, large movements, crossing of the midline, creativity and fun!

Our OT ensured optimal use of the installations by including useful activity ideas and tips for play.



Events

Cast on 4 Kids

Our Mandela Day Cast on 4 Kids was heart-warming with so many wonderful donations. Ours sincere thanks to everyone who made it possible for us to distribute so much joy to the children in 25 ECD Centres.

Balwin Charity Walk

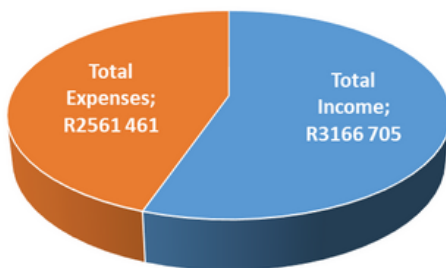
This was such a fun event, with many ECD staff joining in the festivities. Thanks to Balwin for the generous donation of R50 000.

Cape Town Marathon

Our grateful thanks to Felicity Gallagher for running this marathon for Masikhule and for the wonderful donors who supported her.

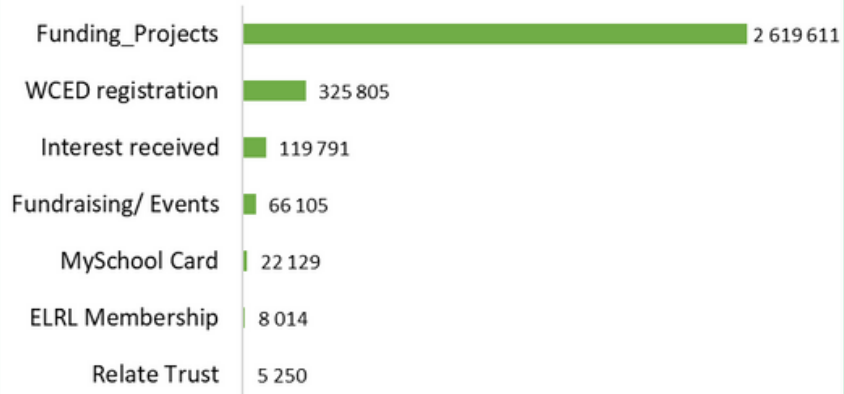
Financial Review

INCOME / EXPENSES 2022/2023

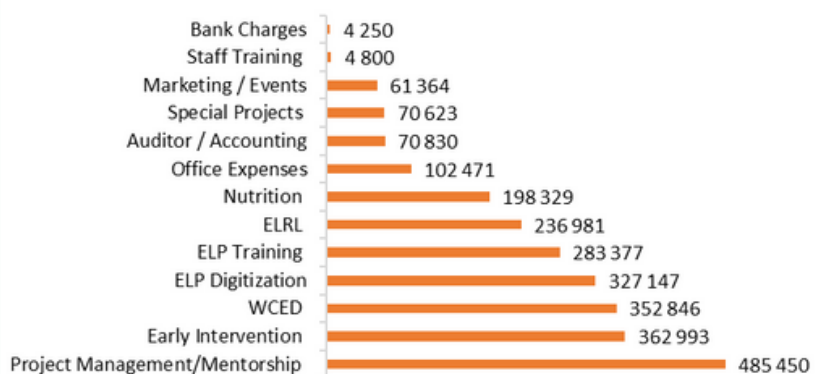


Despite the fact that our economy continues to be challenging and thanks to generous funding received from a wide range of local and international sources - corporate, organisations, companies, trusts and individuals, plus our own fundraising efforts - we have managed to not only continue with our training, mentoring, nutrition program and capacity building - but we have expanded our early intervention with MASKOT and have been able to grow our staff to ensure we continue to reach our goals. We have also built up a reasonable reserve to provide cover for unexpected changes in income and expenditure to ensure we can implement new strategic priorities should we need to in order to achieve our goals for the communities we serve.

ANNUAL INCOME 2022/2023



ANNUAL EXPENSES 2022/2023



Final Word from our Founder

Evidence from the most recent Progress in International Reading Literacy Study (PIRLS) conducted in 2021 showed that 81% of South African Grade 4 learners could not read for meaning in any language. With the majority of school-going children being utterly unprepared for intentional learning, comprehension and competence and facing an uncertain future, our task to ensure young children enter formal schooling on a sound foundation is becoming even more urgent.

Masikhule's integrated approach to early childhood development which includes a strong Occupational Therapy and Early Intervention element has shown positive results, with more young children acquiring the skills and competencies for future learning - mainly due to the development and upskilling of those in charge of their holistic learning.

There is however much more to be done and we remain resolute, focused and determined to reach our goals (and those of the community we serve).

In the words of Roy Bennett, **"What you stay focused on will grow "**.

Masikhule was the grateful recipient of the Ubuntu Award - an award by the community for organisations making a difference in the community. Our partnership with the ECD community - principals and staff - is what motivates us. We appreciate and value all they do to nurture and inspire the young children in their care.

We pride ourselves in being a multi-talented and dynamic team and in early 2023 we welcomed Michaela Naidoo (OT), Shijham Majiedt (ECD support practitioner) and Anne Pedersen (ELP support) into our fold.

Thank you to all our funders, sponsors, contributors, volunteers and partners. Our journey is a combined effort, with each one adding value and ensuring our growth.

In deepest gratitude,

Léanne Keet



To stay in touch and support our efforts:



Thank you!